

# CareerAdvisor Report

Powered By



Enabling Career Clarity and Choices

# Congratulations! Your report is ready!!!

We at CareerCo are committed to "Enable Career Clarity and Choices". In this pursuit, we help students, career aspirants and professionals in selecting appropriate career by indicating the career choices based on their interest, personality and intelligence.

Most people seem to be unsure of their career choices and selection of course/stream, which is one of the most important decisions to be made. This decision is usually influenced by a host of factors, including the parents' own inclination, the child's own interest and the opinions reflected by peers. Gone are the days when career options were limited to just a few! Today's era presents us with a plethora of opportunities, each of them equally rewarding, and with excellent prospects.

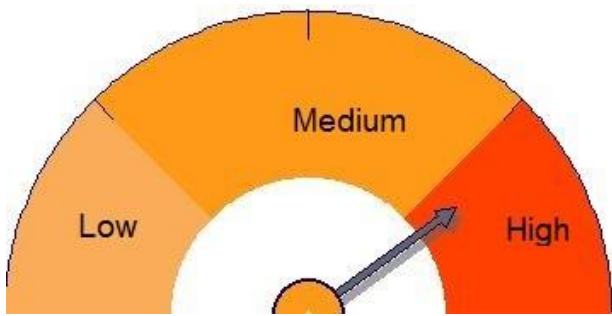
They are also very demanding, therefore, it is important that one chooses their field after careful consideration. It is said that if an individual chooses a career that is in sync with his/her aptitude, interest and personality, s/he is likely to be more productive and successful in life.

We have analyzed your Personality and Multiple Intelligences to arrive at stream recommendations that are suitable to your unique profile. This report will tell you more about yourself, and provides indicative list of career(s) for you.

## How to use this report?

This analysis is only an indication of your recommended Career/Course/Stream based on your Personality & Multiple Intelligence Profile. We strongly urge you to consider other factors, particularly your scholastic achievements, extracurricular activities and your own & parents' aspirations, hobbies and socio economic background to arrive at the most suitable career options for you. In consultation with a counselor, you should arrive at an optimal career option.

## Interpreting the Scores

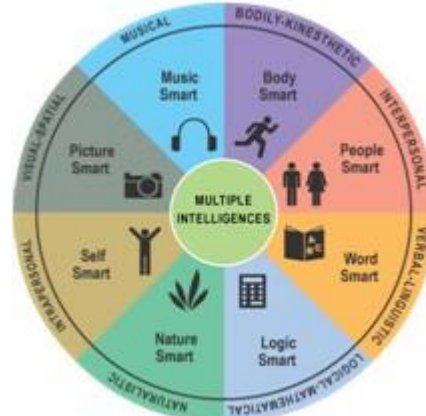
<p><b>Personality Analysis</b></p>  <p>The gauge is a semi-circle divided into three segments: Low (light orange), Medium (orange), and High (red). An arrow points to the High segment.</p>	<p><b>High Score</b> indicates that this is your dominant personality. You are likely to flourish in career requiring this kind of personality traits</p> <p><b>Medium Score</b> indicates that you exhibit these traits and any career requiring such personality traits in moderate quantity will be appropriate for you.</p> <p><b>Low Score</b> indicates that these traits don't come naturally to you. Your career should have low or no requirements of such traits.</p>
<p><b>Multiple Intelligence Analysis</b></p>  <p>The gauge is a semi-circle divided into three segments: Low (light orange), Medium (orange), and High (red). An arrow points to the High segment.</p>	<p><b>High Score</b> indicates that you can take up a career which involves high degree of utilization of that intelligence</p> <p><b>Medium Score</b> indicates that you can take up a career which has an element of work that requires that intelligence</p> <p><b>Low Score</b> indicates that you should refrain from taking up a career which has an element of work that requires that intelligence.</p>

# Personality



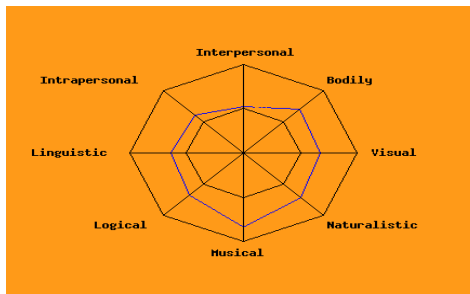
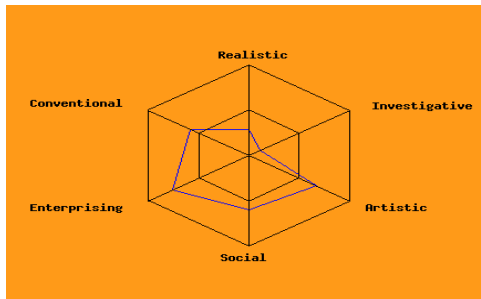
This is based on the theory of world renowned Psychologist, John Holland and the subsequent research work done in this area. According to this theory, each individual has some dominant personalities and combination of those dominant personalities, when matched with appropriate career environment, can give a high probability of success in work life. For example, a person who likes to create new things, works in an unstructured environment and doesn't want to strictly go by rules is likely to succeed in a career which involves creativity like composing music or an actor. Such people are unlikely to succeed in career which requires planning or organization or adherence to rules like an accountant or tax expert or an auditor

# Multiple Intelligence



As per this theory developed by Dr. Howard Gardner, each human being has multiple intelligences and the measure on these different intelligences is the true reflection of an individual's intelligence. IQ is not the complete and true reflection of an individual's intelligence. According to this theory, a child who is able to solve mathematical calculation is not necessarily more intelligent than another child who struggles with mathematical calculations. The other child may be able to create beautiful and creative models using their hands. This child may not be high on mathematical intelligence but can be very high on Bodily-Kinesthetic intelligence.

## Your Scores



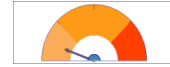
# Personality Analysis

## Realistic – The Doer



- Enjoy working with tools and machines
- Value practical things that they can see and touch
- Like activities that let them see the results of their work
- Tend to be down-to-earth
- Prefer to work with their hands
- Like to work with things-rather than people
- Prefer occupations which involve them in building or repairing things
- Realistic people are independent and enjoy working with their hands
- They are down to earth and very practical
- They enjoy being outdoors and prefer to working by themselves
- They enjoy using tools and machinery
- Realistic people are known as Doers

## Investigative –The Thinkers



- Enjoy math and science
- Like solving problems
- Prefer working by themselves on projects
- Think "outside the box"
- Ask questions
- Thinkers are inquisitive people, and like solving intellectual problems.
- These are people who enjoy mathematics and science
- These are curious people who enjoy independence, and they typically avoid working in a leadership or selling role
- Investigative people are known as Thinker

## Artistic –The Creator



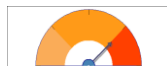
- Enjoy being independent
- Like working in unstructured environments
- Enjoy art, music and drama
- Have a variety of creative interests
- Enjoy trying new things
- Risk-taker
- Emotional
- Like unique styles
- People who have artistic personalities value creative arts - like music, drama, art, books, movies, crafts, design, etc.
- They are very expressive, and enjoy being independent
- They don't like repetitive activities, and prefer doing new things on a regular basis
- These people don't want to be considered part of the "norm" of society - they are people with unique tastes and enjoy being original
- Artistic people are known as Creator

## Social –The Helper



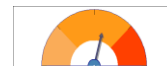
- Like working in groups
- Like being around people
- Sensitive and understanding to those around you
- Co-operate well with others
- Friendly
- Generous with your friends
- Prefer being out with friends than alone at home
- People with social personalities love helping others
- They are very helpful, friendly, and trustworthy
- These people make wonderful counselors, nurses, and teachers because they are – by nature - very nurturing
- They get energized by helping other people, and there's nothing else they'd rather be doing
- Social people are known as Helpers

## Enterprising – The Persuader







- Have strong leadership skills
- Have a powerful, energetic personality
- Self-confident
- Enjoy being a leader
- Like getting measured for your work.
- Have great verbal skills
- Adventurous
- People with an enterprising personality enjoy persuading people to their ideas
- These people enjoy arguing their point of view, and like to sell others on whatever it is they believe
- They are energetic individuals who are very ambitious and sociable
- They are typically well-spoken, and know how to persuade
- They value success in politics, leadership and business
- Enterprising people are known as Persuaders

## Conventional –The Organizer



- Practical
- Enjoy playing by the rules
- Neat and organized
- Like to organize information and/or things
- Thrive in well-ordered environment
- People who are organizers prefer to work in organized environments
- They see themselves as orderly, and able to follow a plan
- They are detail-oriented, and enjoy working with numbers, records, or machines
- Conventional people are known as Organizers

# Multiple Intelligence Analysis

<p><b>Bodily-Kinesthetic</b></p>  <ul style="list-style-type: none"> <li>This kind of intelligence has to do with the ability of an individual to have a control over their body movements. The control is both in terms of gross body movement which has more to do with the physical stamina and the fine body movements which has to do with using various body parts like hand or feet creatively. In the former case, an individual is capable of performing strenuous physical activities, enjoys excess adrenaline pumping activities and adventurous sports or is very particular about physical fitness regime. Whereas, in the latter case, an individual is capable of handling various tools and perform creatively like building models, sewing, knitting, performing Complex dance steps or playing musical instruments with ease perform surgical processes etc. A high score in this area means that an individual can successfully embark on career involving this kind of intelligence like surgery, athletics, dancing, physical activities etc.</li> </ul>	<p><b>Verbal-Linguistic</b></p>  <ul style="list-style-type: none"> <li>This kind of intelligence has to do with the ability of an individual to have command over language. An individual with strong verbal-linguistic intelligence is able to use words well, both when writing &amp; speaking. Such individuals are typically very good at writing stories, memorizing information and reading. They enjoy reading and writing, they are good at debating or giving persuasive speeches. They are able to explain things well and often use humor when telling stories. A high score in this area means that an individual can successfully embark on career involving this kind of intelligence like author, editor, translator &amp; interpreter, creative writing, technical writing, Teacher, Lawyer etc.</li> </ul>
<p><b>Logical-Mathematical</b></p>  <ul style="list-style-type: none"> <li>This kind of intelligence has to do with the ability of an individual to think &amp; act logically and work at ease with numbers. An individual with strong logical-mathematical intelligence is good at reasoning, recognizing patterns and logically analyzing problems. These individuals tend to think conceptually about numbers, relationships and patterns. They like scientific experiments, solving complex computations and thinking about abstract ideas. A high score in this area means that an individual can successfully embark on career involving this kind of intelligence like mathematician, accountants, actuaries, scientists, engineers, lawyers etc.</li> </ul>	<p><b>Intrapersonal</b></p>  <ul style="list-style-type: none"> <li>This kind of intelligence has to do with the ability of an individual to have self-control or an awareness of their inner feelings. Individuals who are strong in intrapersonal intelligence are good at being aware of their own emotional states, feeling and motivations. They tend to enjoy self-reflection and analysis, including day-dreaming, exploring relationships with others and assessing their personal strengths. Such individuals are good and analyzing their strengths and weaknesses, enjoy analyzing theories and ideas, clearly understands the basis for their own motivations and feelings. A high score in this area means that an individual can successfully embark on career involving this kind of intelligence like entrepreneurs, therapists, philosophers, scientists, theorist etc.</li> </ul>
<p><b>Interpersonal</b></p>  <ul style="list-style-type: none"> <li>This kind of intelligence has to do with the ability of an individual to be aware of others. Individuals with strong interpersonal intelligence are good at understanding and interacting with other people. These individuals are skilled at assessing the emotions, motivations, desires and intentions of those around them. They are good at verbal and non-verbal communication; they see situations from different perspectives and create positive relationships with others. They are good at resolving conflicts within a group. A high score in this area means that an individual can successfully embark on career involving this kind of intelligence like sales person, counselor, psychologist, politicians, religious leaders etc.</li> </ul>	<p><b>Musical</b></p>  <ul style="list-style-type: none"> <li>This kind of intelligence has to do with the ability of an individual to work with music. An individual who is strong in musical intelligence is good at thinking in patterns, rhythms and sounds. Such individuals have a strong appreciation for music and are often good at musical composition and performance. Such individuals enjoy singing and playing musical instruments. They recognize musical patterns and tones easily. They are good at remembering songs and melodies and have a rich understanding of musical structure, rhythm and notes. A high score in this area means that an individual can successfully embark on career involving this kind of intelligence like musician, singer, composers etc.</li> </ul>
<p><b>Naturalistic</b></p>  <ul style="list-style-type: none"> <li>This kind of intelligence has to do with the ability of an individual to work with nature. An individual with high naturalistic intelligence is more in tune with nature and is often interested in nurturing, exploring the environment and learning about species. Such individuals are aware of even subtle changes in their environment. They are interested in subjects like botany, biology and zoology. They are good at categorizing and cataloguing information easily. They enjoy camping, gardening, hiking and exploring the outdoors. A high score in this area means that an individual can successfully embark on career involving this kind of intelligence like botanist, zoologist, farmer, conservationist etc.</li> </ul>	<p><b>Visual-Spatial</b></p>  <ul style="list-style-type: none"> <li>This kind of intelligence has to do with the ability of an individual to visualize. An individual with strong visual-spatial intelligence is good at visualizing. Such individuals are often good with directions as well as maps, charts, videos and pictures. They enjoy reading and writing. They are good at putting puzzles together and interpreting pictures, graphs and charts. They enjoy drawing, painting and visual arts. They can easily recognize patterns. A high score in this area means that an individual can successfully embark on career involving this kind of intelligence like architects, engineers, fashion designer, product designer, web designer, animators, inventors, pilots, sailors etc.</li> </ul>

## Indicative Career Choices

Career	Public Relation Specialist		
Preferred Stream	Humanities		
Education Qualification Path	Bachelor Degree in Business Administration	Master in Business Administration	

Career	Choreographer		
Preferred Stream	Humanities		
Education Qualification Path	Bachelor in Music		

Career	Music Director		
Preferred Stream	Humanities		
Education Qualification Path	Bachelor in Music		
	Bachelor in Fine Arts		

Career	Radio Jockey		
Preferred Stream	Humanities		
Education Qualification Path	Bachelor in Media		

Career	Copy Writer		
Preferred Stream	Humanities		
Education Qualification Path	Bachelor in Media		
	Bachelor in English		
	Bachelor in Hindi		

Career	Actor		
Preferred Stream	Humanities		
Education Qualification Path	Bachelor Degree	Specialization course in Acting	
	Specialization course in Acting		

Career	Interior Designer		
Preferred Stream	Humanities		
Education Qualification Path	Bachelor in Designing		

Career	Singer		
Preferred Stream	Humanities		
Education Qualification Path	Bachelor in Music		



**Next Steps:**

This analysis is only an indication of your recommended course of action based on your Personality & Multiple Intelligence Profile. We strongly urge you to consider other factors, particularly your scholastic achievements, extracurricular activities and your own & parents' aspirations, hobbies and socio economic background to arrive at the most suitable career options for you.

In consultation with a counselor, you should arrive at an optimal career option.

To avail the services of Career Counselor at CareerCo, you can book the appointment by writing to [helpline@CareerCo.in](mailto:helpline@CareerCo.in) The Career Counseling can be done Face-to-face in New Delhi or through Skype or Telephone, based on your convenience.

**Important Note:**

This report has been designed by CareerCo, a unit of IPM Learning India Private Limited (IPML).

This is a confidential report, to be read by candidate and his/her parents. This report is entirely based on the responses given by the candidate during Assessment. Research suggests that psychometric assessments can be powerful predictors of successful performance in study and work areas.

The recommendations in the report are indicative in nature and should not be seen as a final decision. Students/Parents are advised to consult a counselor before taking any definitive decision. IPML exempt themselves of any liability.